

FEATURES

- Multi-layer moisture-resistant finish for premium protection and durability.
- 6 Drawers with full storage extension and Blum soft-close drawer mechanism.
- Open cabinet with large storage area.
- Vanities transport easily and set up in minutes.

MATERIAL

Solid maple and birch wood

DM BATH Two-Year Limited Warranty

See website for warranty information.

AVAILABLE COLOUR FINISHES

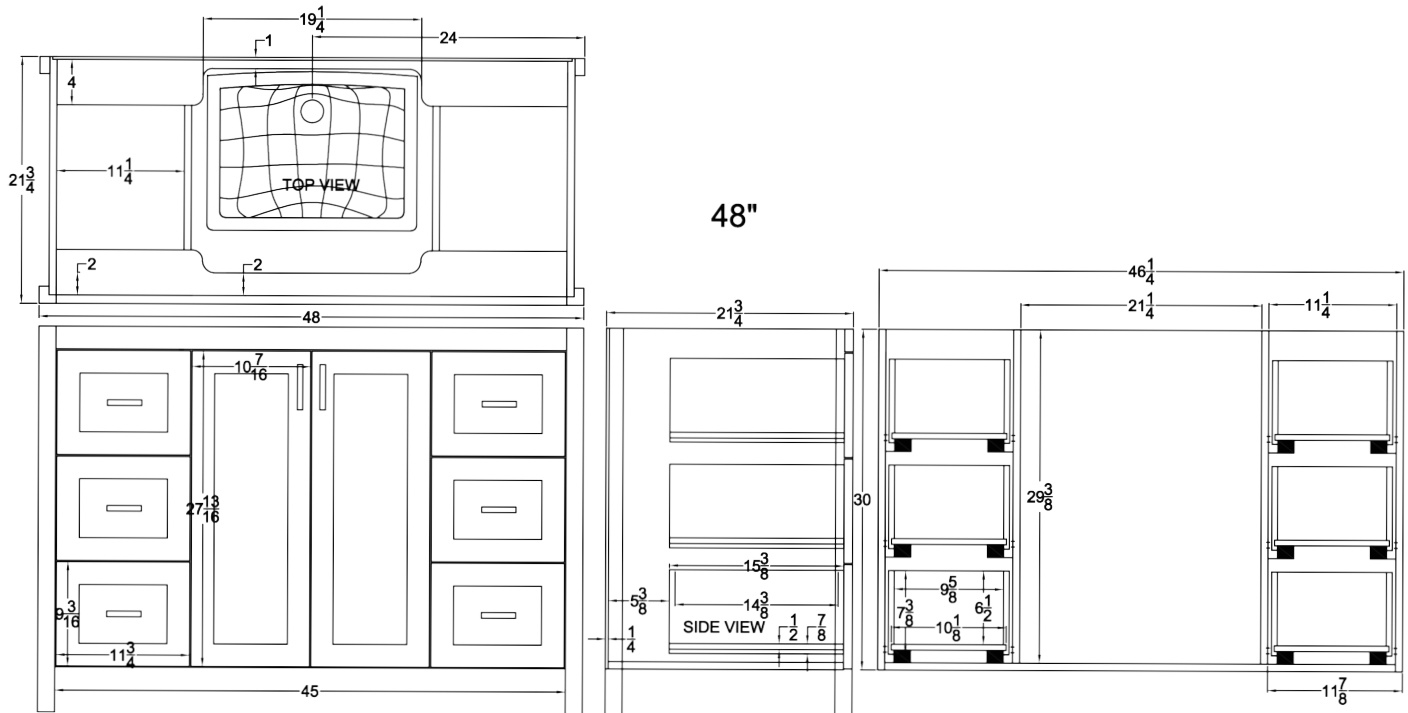
Colour swatches are for reference only.

	DESIGNER WHITE	DMV4801-DW
	LIGHT GREY	DMV4801-LG
	COOL GREY	DMV4801-CG
	IRON GREY	DMV4801-IG
	MATTE BLACK	DMV4801-BL
	CUSTOM COLOUR	DMV4801-CC



RELATED PRODUCTS

DMT49-WQ	PURE WHITE 49" QUARTZ COUNTERTOP
DMT49-WM	WHITE MARQUINA 49" QUARTZ COUNTERTOP
DMT49-BM	BLACK MARQUINA 49" QUARTZ COUNTERTOP
DMT49-SQ	STATUARIO 49" QUARTZ COUNTERTOP
DMS21	21" QUARTZ SIDE SPLASH
DMB49	49" QUARTZ BACKSPLASH
DMS01W	RECTANGULAR UNDERMOUNT CERAMIC SINK



NOTE

Please install product according to installation instructions.