

FEATURES

- Multi-layer moisture-resistant finish for premium protection and durability.
- 5 Drawers with full storage extension and Blum soft-close drawer mechanisms.
- 2 Open cabinets with large storage area.
- Vanities transport easily and set up in minutes.

MATERIAL

Solid maple and birch wood

DM BATH Two-Year Limited Warranty

See website for warranty information.

AVAILABLE COLOUR FINISHES

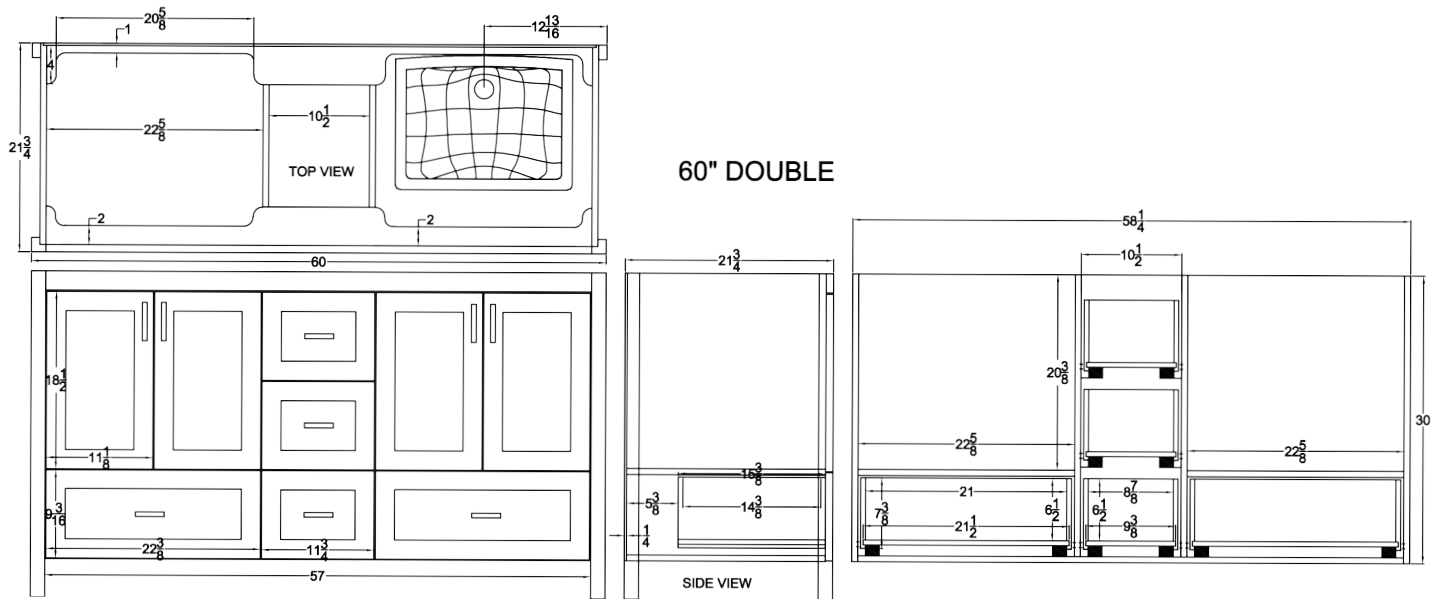
Colour swatches are for reference only.

	DESIGNER WHITE	DMV60DS-DW
	LIGHT GREY	DMV60DS-LG
	COOL GREY	DMV60DS-CG
	IRON GREY	DMV60DS-IG
	MATTE BLACK	DMV60DS-BL
	CUSTOM COLOUR	DMV60DS-CC



RELATED PRODUCTS

DMT61-WQ	PURE WHITE 61" QUARTZ COUNTERTOP
DMT61-WM	WHITE MARQUINA 61" QUARTZ COUNTERTOP
DMT61-BM	BLACK MARQUINA 61" QUARTZ COUNTERTOP
DMT61-SQ	STATUARIO 61" QUARTZ COUNTERTOP
DMS21	21" QUARTZ SIDE SPLASH
DMB61	61" QUARTZ BACKSPLASH
DMS01W	RECTANGULAR UNDERMOUNT CERAMIC SINK



NOTE

Please install product according to installation instructions.