

Specification Sheets for Wall Storage

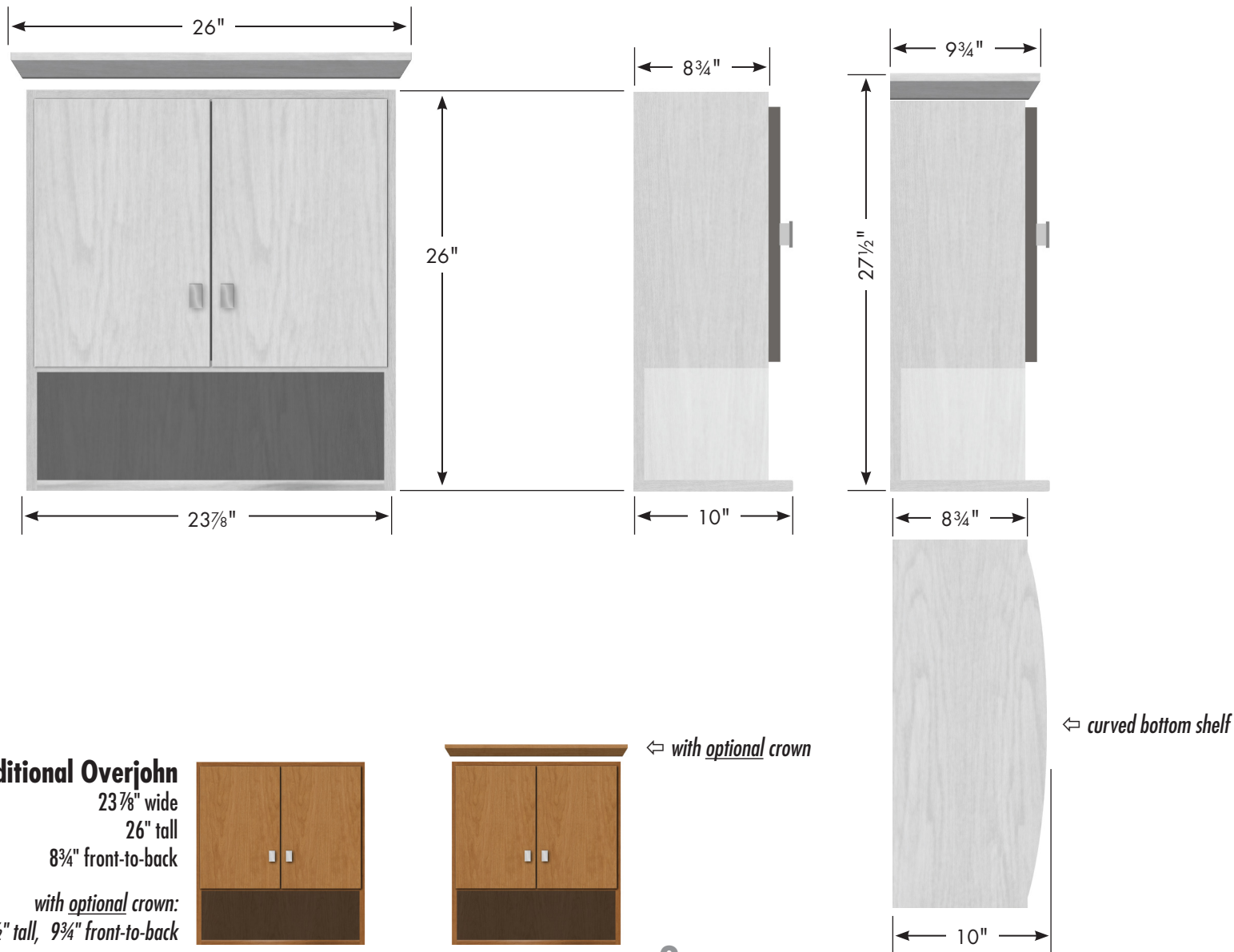
SPECIFICATION VARIANCES

Dimensions on finished cabinets may vary slightly from those shown on these specification sheets due to variability in construction materials.

Our products are engineered to maintain close dimensional tolerances but variability in manufacturing materials can change dimensions slightly (normally within $\pm 1/8$ " but occasionally up to $\pm 3/16$ ").

In most applications these slight variations will have no impact upon installation, appearance or function. However, when planning and finishing a space for a built in vanity, **do not frame or finish the space before measuring the actual cabinets in your ensemble!**

We can not be responsible for any expenses incurred as a result of the end user or contractor not following this guideline.



24" Traditional Overjohn

23⁷/₈" wide

26" tall

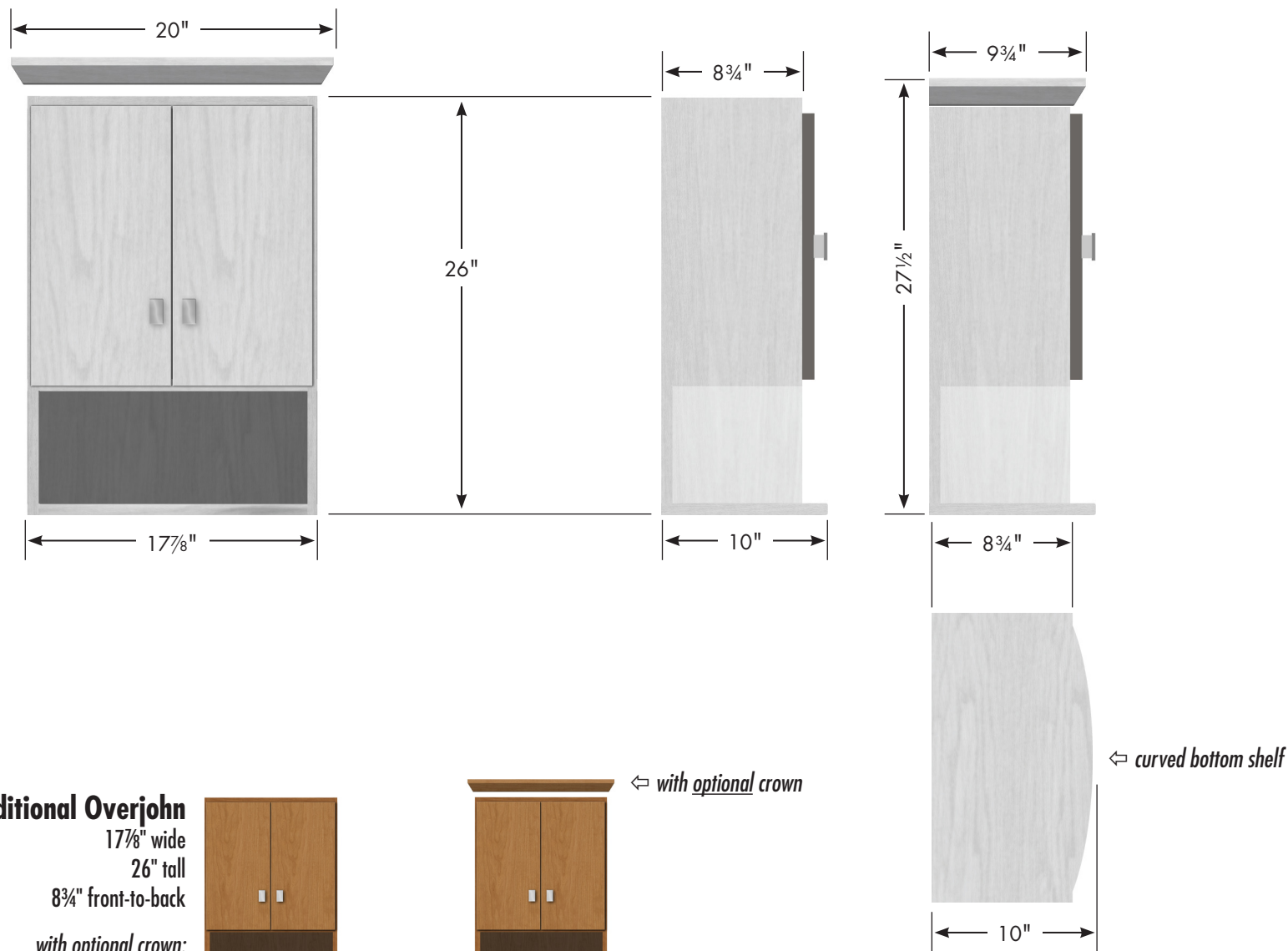
8³/₄" front-to-back

with optional crown:

26" wide, 27¹/₂" tall, 9³/₄" front-to-back



↳ with optional crown



18" Traditional Overjohn

17⁷/₈" wide

26" tall

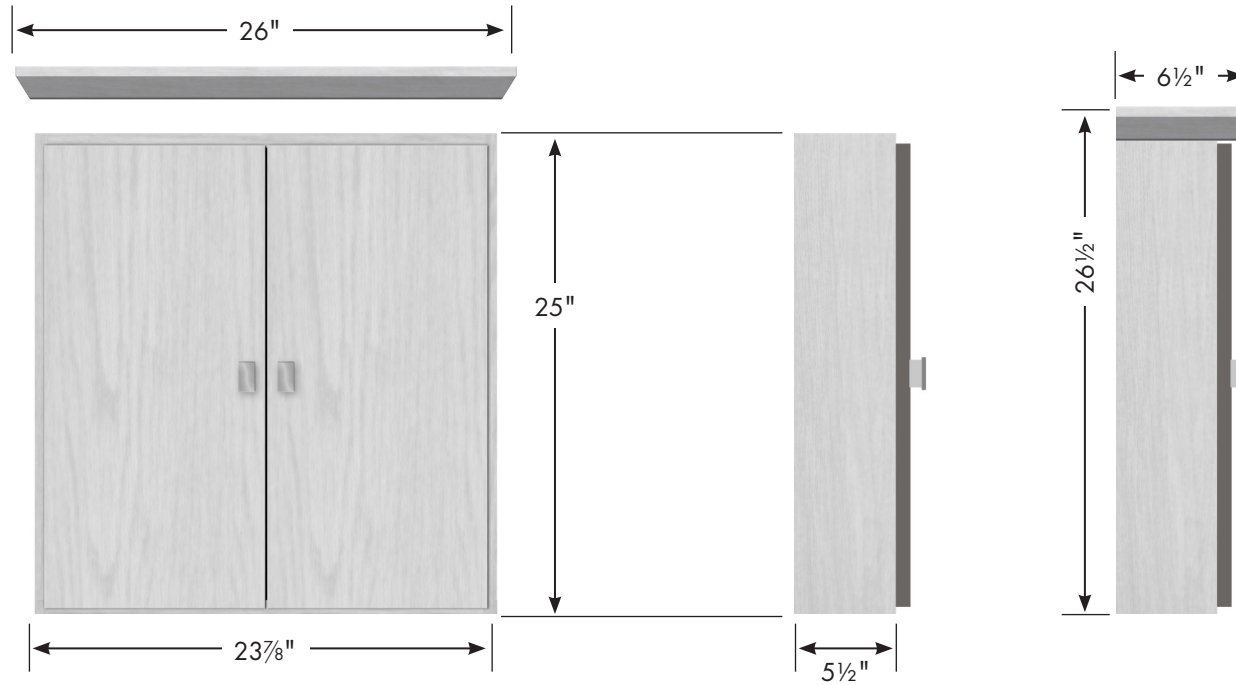
8³/₄" front-to-back

with optional crown:

20" wide, 27¹/₂" tall, 9³/₄" front-to-back



⇐ with optional crown



24" Traditional Cubby

23 7/8" wide

25" tall

5 1/2" front-to-back

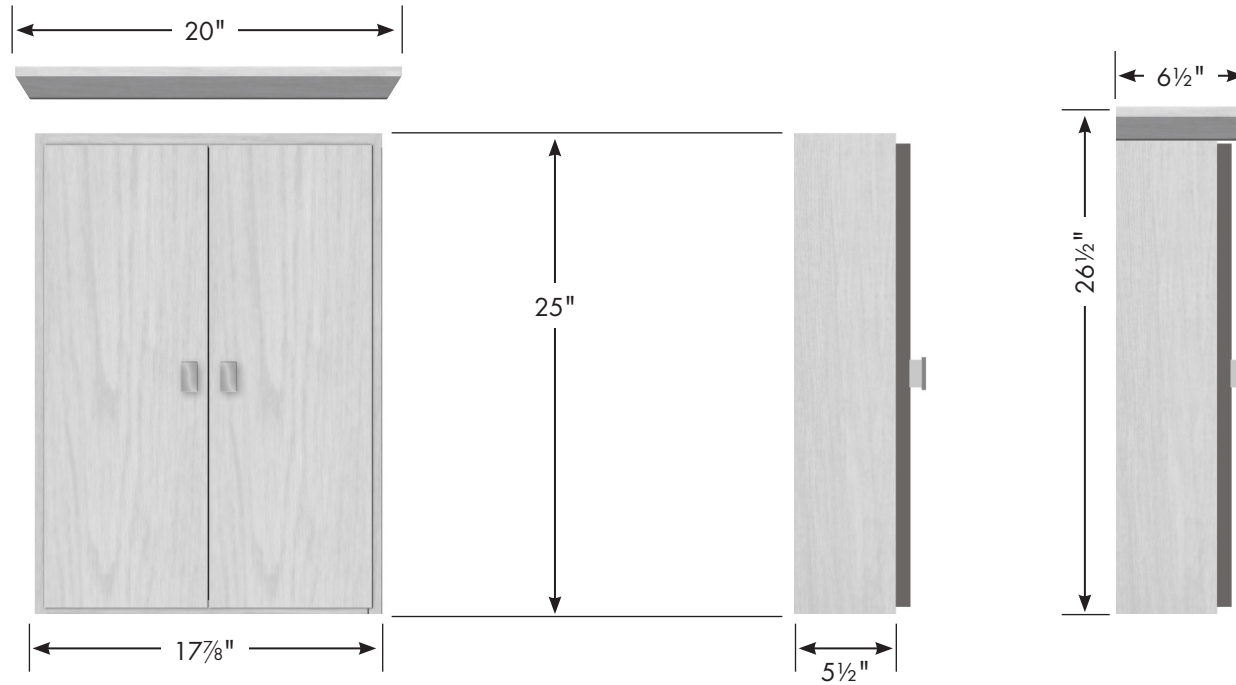
with optional crown:

26" wide, 26 1/2" tall, 6 1/2" front-to-back



↔ *with optional crown*

4



18" Traditional Cubby

17 $\frac{7}{8}$ " wide

25" tall

5 $\frac{1}{2}$ " front-to-back

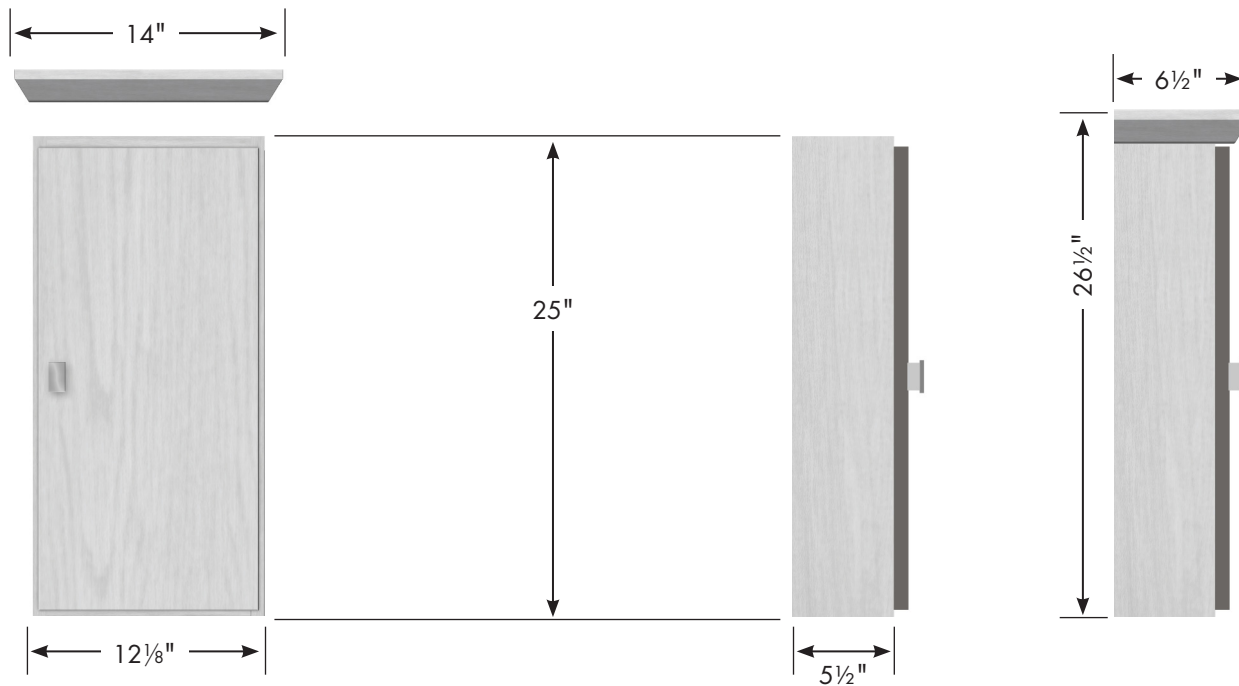
with optional crown:

26" wide, 26 $\frac{1}{2}$ " tall, 6 $\frac{1}{2}$ " front-to-back



⇐ *with optional crown*





12" Traditional Cubby

12 1/8" wide

25" tall

5 1/2" front-to-back

with optional crown:

14" wide, 26 1/2" tall, 6 1/2" front-to-back



⇔ *with optional crown*