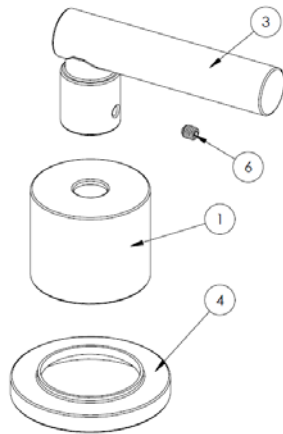
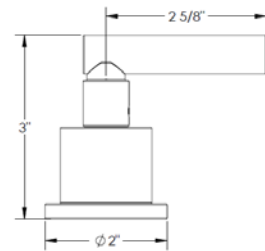


HANDLE TRIMS

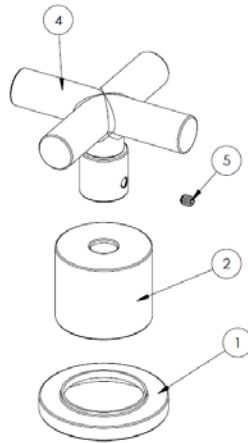
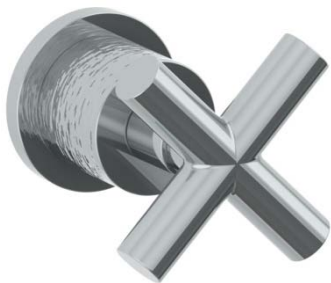
Sense-Lever (Code: CL14)



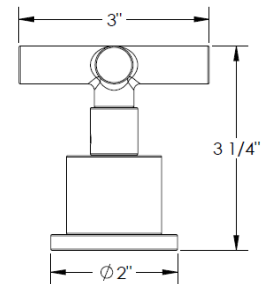
ITEM NO.	PART NUMBER	QTY.
1	CL14SM-ESC	1
3	CL14-LVR	1
4	CL14-ESC-RING	1
6	SSCUPSKT 0.164-32x0.1875-HX-S	1



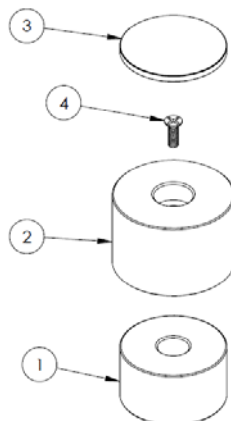
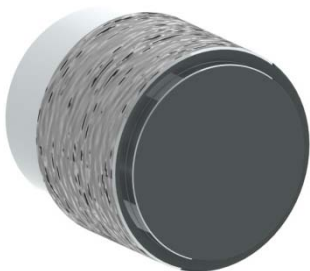
Sense-Cross (Code: CL15)



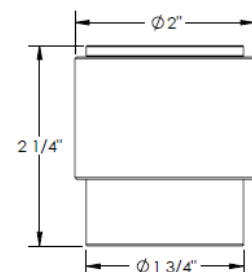
ITEM NO.	PART NUMBER	QTY.
1	CL14-ESC-RING	1
2	CL14SM-ESC	1
4	CL15-CRSS-HNDL	1
5	SSCUPSKT 0.164-32x0.1875-HX-S	1



Sense-Knob (Code: CL16)



ITEM NO.	PART NUMBER	QTY.
1	CL16-ESC	1
2	CL16-KNOB	1
3	CL16-CAP	1
4	CR-FHMS 0.164-32x0.5x0.5-S	1



Specification from Finished Wall to Tip of Broach Stem

HANDLE TRIM #	MEASUREMENT (IN.)
CL14/ CL15	2 5/8
CL16	2 1/8

Note: When fitting handle it may be necessary to shorten broach stem and/or threaded nipple to eliminate gap between handle and escutcheon

IMPORTANT INSTALLATION INFORMATION

- USE TEFLON TAPE OR PIPE SEALANT FOR THREADED CONNECTIONS
- DO NOT USE PLUMBER'S PUTTY ON ANY OF THE BRASS COMPONENTS
This will cause the finish to tarnish and void the warranty. A non-corrosive Alkoxy Silicone is recommended.
- DURING SWEATING OF LINES DO NOT OVERHEAT CASTING
Overheating may cause damage to internal mechanism
- COPPER ADAPTORS MAY BE REQUIRED TO COMPLETE YOUR INSTALLATION

For technical support, please call 718-257-2800